

Surround Tile

Stijlnummer	5T125	
Collectie	Space Worx	
Producttype	Tapijttegel	
Construction	Standard	Data + Performance
Type Fabricage	ISO 2424	tufted 1/12" 47.2 per 10cm
Uitzicht	ISO 2424	Multilevel-Patroonlus
Verfmethode	EN 994	100% In Oplossing Geverfd
Productformaat	EN 994	61 cm x 61 cm 24 in x 24 in
Vezeel	ISO 2424	Ecosolution Q® Polyamide 6
Totale Dikte	ISO 1765	5.7 mm
Afgewerkte Pooldikte	ISO 1766	2.6 mm
Totale Massa	ISO 8543	2961 g/m²
Getuft Gewicht	ISO 2424	509 g/m²
Effectieve Poolmassa	ISO 8543	283 g/m²
Pooldichtheid	ISO 8543	0.110 g/cm³
Totaal Gerecycleerde Inhoud		57% (pre-consumer 57% post-consumer 0%)

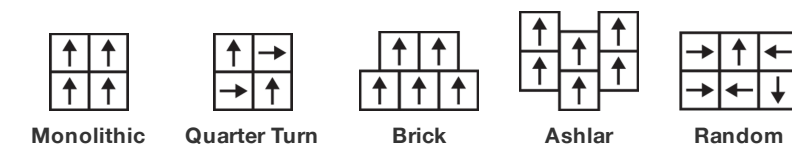


Gegevens

Steken	ISO 1763	175,000/m² 37 per 10cm
Beschermende Behandelingen		SSP® Shaw Grondbescherming
Elektrostatische Weerstand	ISO 6356	≤ 2.0 kv (Stroll Test)
Gebruik Classificatie	EN 1307	33 Commercial Heavy
Luxe klasse	EN 1307	LC1
Dimensionale Stabiliteit	EN 986	≤ 0.2%
Contactgeluidsisolatie	ISO 10140	20 Db
Geluidsabsorptieclassificatie	ISO 354/11654	0.15 Aw Class E
Warmteweerstand m ² K/w	ISO 8302	0.058 M² K/W Tog 0.58
Weerstand Tegen Droog Uitglijden	ISO 13893	Pass/No Pulled Loops
Kleurvastheid Voor Licht	ISO 105-B02	>6
Ontvlambaarheid	EN 13501-1	Bfl-S1 (Adhered Testing)
Stoel Met Wieltjes	EN 985	≥2.4 Continuous Use

Levenslang Commercieel Beperkt subject to installation in full accordance with manufacturer's instructions and a regular effective cleaning and maintenance programme.

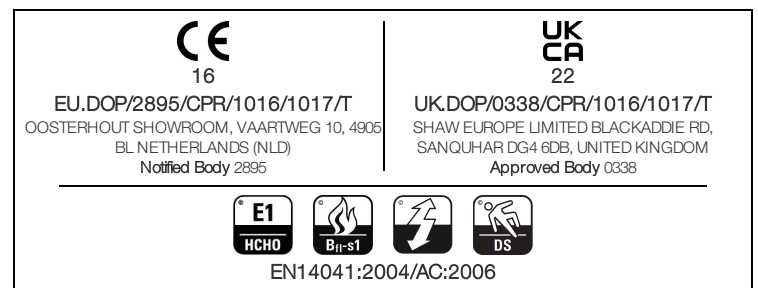
Aanbevolen Installatiemethode



20 dB

Corporate Headquarters +1 800 257 7429 | +1 706 532 7984 | Atlanta +1 404 853 7429 | Bengaluru +91 80 6773 0202 | Beijing +86 10 6568 588 | Chicago +1 312 467 1331 | Dubai +971 4 584 6956 | Hong Kong +852 2623 0371 | Latin America (Miami) +1 305 827 5912 | London +44 207 961 4120 | Los Angeles +1 800 233 1614 | Melbourne +61 3 9939 8543 | Mexico City +55 5010 7600 | Mumbai +91 22 6284 5050 | Nantong +86 400 800 7429 | New York +1 212 953 7429 | Paris +33 (0) 1 81 22 44 39 | San Francisco +1 415 955 1920 | Santiago +562 2431 5000 x 550 | São Paulo +55 11 3071 1702 | Shanghai +86 21 3338 4000 | Singapore +65 6733 1811 | Sydney +1 800 556 302

© 2024 Shaw Industries Group, Inc., a Berkshire Hathaway Company
May 18, 2024



Coördinerende Producten

Carpet Tile: **Basic Tile, Primary Tile, Centric Tile**

Kenmerken + Certificeringen

Certifications Below Apply Exclusively To The Carpet Tile Rug Itself And Not The Lokworx Tabs Adhesive

Declaration of Performance

Cradle to Cradle gecertificeerd™

Health Product Declaration (HPD)

Environmental Product Declaration (EPD)

Living Building Challenge (LBC)

Verklaar

nsf 140

Building Research Establishment (BRE)

Singapore Green Label

milieugarantie

productverpakking

land van herkomst

BREEAM Contribution Credit

EU.DOP/2895/CPR/1016/1017/T**Silver Level (Version 4.0)****1,000 ppm (Parts Per Million) Disclosure****3de Partij Gecertificeerd in Overeenstemming Met ISO14044, ISO14025 & EN15804****Vrij Van Chemische Producten Die Op De Rode Lijst Staan****Voldoet Aan LBC****Goud****A+ Health/A+ Retail 0.321/0.426 Ecopoints****Gecertificeerd****Re[turn] Reclamation Program* | Through Our Environmental Guarantee, Shaw Pledges to Transport And Recycle Any Ecoworx Carpet.****100% Recycleerbaar****Verenigde Staten****Certificate of Approval****Schools/Offices/Health/Industrial Shed Retail**

Well V2 Contribution Credit

X08 Hazardous Material Reduction

Part 1: Limit Hazardous Materials Optimization

X10 Volatile Compound Reduction

Part 1 (A): Manage Volatile Organic Compounds (VOCs) Optimization

X11 Long Term Emissions Control

Part 2: Flooring Optimization

X13 Enhanced Material Precaution

Part 1: Select Optimized Materials Optimization

X14 Material Transparency

Part 1: Promote Ingredient Disclosure Optimization

C2C Silver Level (Version 4.0)**C2C Silver Level (Version 4.0)****Green Label Plus Certification: GLP9968****C2C Silver Level (Version 4.0)****C2C Silver Level (Version 4.0)**

Groen Leed Bijdragekrediet

"MR-krediet: openbaarmaking en optimalisering van bouwproducten

Milieuproductverklaringen - Optie 1: Milieuproductverklaring (EPD)"

"MR-krediet: Openbaarmaking en optimalisering van bouwproducten

Materiaalingrediënten - Optie 1: Rapportage materiaalingrediënten"

"MR-krediet: openbaarmaking en optimalisering van bouwproducten

Materiaalingrediënten - Optie 2: Optimalisering van materiaalingrediënten"

MR Credit: Building Product Disclosure and Optimization

Sourcing of Raw Materials - Option 2: Leadership Extraction Practices

"EQ-krediet: materialen met lage emissie Optie 1: Berekeningen per productcategorie"

MR Credit: Interiors Life-Cycle Impact Reduction

Option 3: Design for Flexibility

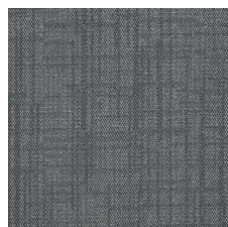
3rd Party Certified in Accordance with ISO14044, ISO14025 & EN15804**C2C Silver Level (Version 4.0) or HPD (Version 2.1)****C2C Silver Level (Version 4.0)****Environmental Guarantee: Re[turn] Reclamation Program* | Through Our Environmental Guarantee, Shaw Pledges to Transport And Recycle Any Ecoworx Carpet.****Green Label Plus Certification: GLP9968****Ecoworx Tile with Lokdots Installation System**

Memberships

WGBC Framework
UKGBC
Emirates Green Building Council
Chemsec

WGBC Framework
UKGBC
Emirates Green Building Council
Chemsec

Lichtreflectiewaarde



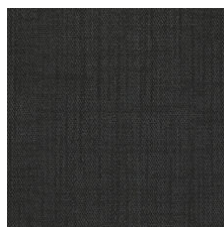
Blue Herring 17481
LRV 9.6



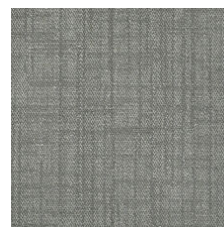
Denim 17496
LRV 4.5



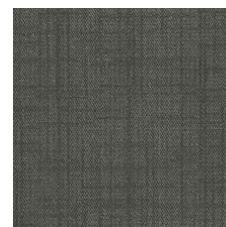
Brown Bark 17500
LRV 4.4



Raven 17505
LRV 2.6



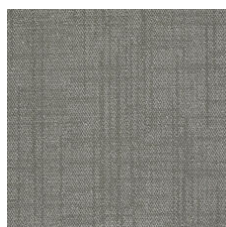
Limestone 17530
LRV 12.5



Dove Grey 17557
LRV 6.5



Storm Cloud 17597
LRV 5.7



Slate 17760
LRV 10



Khaki 17761
LRV 12.4

Aanvullende Informatie

* To learn more about the recyclability of our products and our re[TURN], please visit shawcontract.com/sustainability.

**Meets or exceeds all local and national regulations in country of manufacture.

***This carpet is manufactured to be ADA compliant, but to be fully ADA compliant, the end-user must ensure the carpet is adhered to the floor and installed as outlined in the ADA standards.

[Installation Guidelines](#)

[Maintenance Guidelines](#)

[levenslang commercieel beperkt](#)

Specifications are subject to nominal manufacturing variance. Material supply and/or manufacturing processes may necessitate changes without notice.

This product is an exclusive design and may not be duplicated in any manner. Use of this design in the creation of another product design is also strictly prohibited.

Visit shawcontract.com/testing for more information.



PVC-Free

Corporate Headquarters +1 800 257 7429 | +1 706 532 7984 | Atlanta +1 404 853 7429 | Bengaluru +91 80 6773 0202 | Beijing +86 10 6568 588 | Chicago +1 312 467 1331 | Dubai +971 4 584 6956 | Hong Kong +852 2623 0371 | Latin America (Miami) +1 305 827 5912 | London +44 207 961 4120 | Los Angeles +1 800 233 1614 | Melbourne +61 3 9939 8543 | Mexico City +55 5010 7600 | Mumbai +91 22 6284 5050 | Nantong +86 400 800 7429 | New York +1 212 953 7429 | Paris +33 (0) 1 81 22 44 39 | San Francisco +1 415 955 1920 | Santiago +562 2431 5000 x 550 | São Paulo +55 11 3071 1702 | Shanghai +86 21 3338 4000 | Singapore +65 6733 1811 | Sydney +1 800 556 302

© 2024 Shaw Industries Group, Inc., a Berkshire Hathaway Company
May 18, 2024

3 of 3